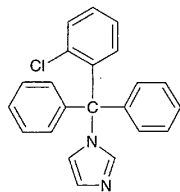


## Clotrimazole

クロトリマゾール



$C_{22}H_{17}ClN_2$ : 344.84

1-[(2-Chlorophenyl)diphenylmethyl]-1*H*-imidazole  
[23593-75-1]

Clotrimazole, when dried, contains not less than 98.0% of  $C_{22}H_{17}ClN_2$ .

**Description** Clotrimazole occurs as a white, crystalline powder. It is odorless and tasteless.

It is freely soluble in dichloromethane and in acetic acid (100), soluble in *N,N*-dimethylformamide, in methanol and in ethanol (95), slightly soluble in diethyl ether, and practically insoluble in water.

**Identification (1)** To 0.1 g of Clotrimazole add 10 mL of 5 mol/L hydrochloric acid TS, dissolve by heating, and cool. To this solution add 3 drops of Reinecke salt TS: a light red precipitate is produced.

(2) Determine the absorption spectrum of a solution of Clotrimazole in methanol (1 in 5000) as directed under the Ultraviolet-visible Spectrophotometry, and compare the spectrum with the Reference Spectrum: both spectra exhibit similar intensities of absorption at the same wavelengths.

(3) Determine the infrared absorption spectrum of Clotrimazole, previously dried, as directed in the potassium bromide disk method under the Infrared Spectrophotometry, and compare the spectrum with the Reference Spectrum: both spectra exhibit similar intensities of absorption at the same wave numbers.

(4) Perform the test with Clotrimazole as directed under the Flame Coloration Test (2): a green color appears.

**Melting point** 142 – 145°C

**Purity (1)** Clarity and color of solution—Dissolve 0.5 g of Clotrimazole in 10 mL of dichloromethane: the solution is clear and colorless.

(2) Chloride—Dissolve 1.0 g of Clotrimazole in 40 mL of *N,N*-dimethylformamide, add 6 mL of dilute nitric acid and water to make 50 mL. Perform the test using this solution as the test solution. Prepare the control solution with 0.60 mL of 0.01 mol/L hydrochloric acid VS, 40 mL of *N,N*-dimethylformamide, 6 mL of dilute nitric acid and water to make 50 mL (not more than 0.021%).

(3) Sulfate—Dissolve 0.5 g of Clotrimazole in 10 mL of methanol, and add 1 mL of dilute hydrochloric acid and water to make 50 mL. Perform the test using this solution as the test solution. Prepare the control solution with 0.05 mL of 0.005 mol/L sulfuric acid VS, 10 mL of methanol, 1 mL of dilute hydrochloric acid and water to make 50 mL (not more than 0.048%).

(4) Heavy metals—Proceed with 2.0 g of Clotrimazole

according to Method 2, and perform the test. Prepare the control solution with 2.0 mL of Standard Lead Solution (not more than 10 ppm).

(5) Arsenic—Prepare the test solution with 1.0 g of Clotrimazole according to Method 3, and perform the test using Apparatus B (not more than 2 ppm).

(6) Imidazole—Dissolve 0.10 g of Clotrimazole in exactly 10 mL of dichloromethane, and use this solution as the sample solution. Separately, dissolve 0.025 g of imidazole for thin-layer chromatography in dichloromethane to make exactly 50 mL. Pipet 5 mL of this solution, add dichloromethane to make exactly 50 mL, and use this solution as the standard solution. Perform the test with these solutions as directed under the Thin-layer Chromatography. Spot 10  $\mu$ L each of the sample solution and the standard solution on a plate of silica gel for thin-layer chromatography. Develop the plate with a mixture of methanol and chloroform (3:2) to a distance of about 10 cm, and air-dry the plate. Spray evenly sodium hydrochloride TS on the plate, and air-dry the plate for 15 minutes, then spray evenly potassium iodide-starch TS on the plate: the spot from the sample solution, corresponding to that from the standard solution, is not more intense than that from the standard solution.

(7) (2-Chlorophenyl)-diphenylmethanol—Dissolve 0.20 g of Clotrimazole in exactly 10 mL of dichloromethane, and use this solution as the sample solution. Separately, dissolve 0.010 g of (2-chlorophenyl)-diphenylmethanol for thin-layer chromatography in dichloromethane to make exactly 100 mL, and use this solution as the standard solution. Perform the test with these solutions as directed under the Thin-layer Chromatography. Spot 10  $\mu$ L each of the sample solution and the standard solution on a plate of silica gel with fluorescent indicator for thin-layer chromatography. Develop the plate with a mixture of ethyl acetate and ammonia solution (28) (50:1) to a distance of about 10 cm, and air-dry the plate. Examine under ultraviolet light (main wavelength: 254 nm): the spot from the sample solution, corresponding to that from the standard solution, is not more intense than that from the standard solution.

**Loss on drying** Not more than 0.5% (1 g, 105°C, 2 hours).

**Residue on ignition** Not more than 0.10% (1 g).

**Assay** Weigh accurately about 0.35 g of Clotrimazole, previously dried, and dissolve in 80 mL of acetic acid (100), and titrate with 0.1 mol/L perchloric acid VS (potentiometric titration). Perform a blank determination, and make any necessary correction.

Each mL of 0.1 mol/L perchloric acid VS  
= 34.484 mg of  $C_{22}H_{17}ClN_2$

**Containers and storage** Containers—Well-closed containers.

Storage—Light-resistant.