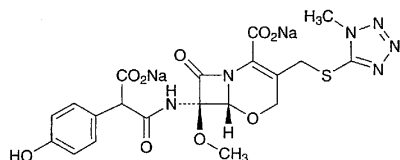


Containers and storage Containers—Tight containers.
Storage—Light-resistant.

Latamoxef Sodium

ラタモキセフナトリウム



$C_{20}H_{18}N_6Na_2O_9S$: 564.44

Disodium (6*R*,7*R*)-7-[2-carboxylato-2-(4-hydroxyphenyl)acetamino]-7-methoxy-3-(1-methyl-1*H*-tetrazol-5-ylsulfanylmethyl)-8-oxo-5-oxa-1-azabicyclo[4.2.0]oct-2-ene-2-carboxylate [64953-12-4]

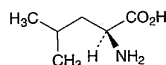
Latamoxef Sodium conforms to the requirements of Latamoxef Sodium in the Requirements for Antibiotic Products of Japan.

Description Latamoxef Sodium occurs as white to light yellowish white powder or masses.

It is very soluble in water and in methanol, slightly soluble in ethanol (95), and practically insoluble in diethyl ether.

L-Leucine

L-ロイシン



$C_6H_{13}NO_2$: 131.17

(2*S*)-2-Amino-4-methylpentanoic acid [61-90-5]

L-Leucine, when dried, contains not less than 98.5% of $C_6H_{13}NO_2$.

Description L-Leucine occurs as white crystals or crystalline powder. It is odorless or has a faint characteristic odor, and has a slightly bitter taste.

It is freely soluble in formic acid, sparingly soluble in water, and practically insoluble in ethanol (95).

It dissolves in dilute hydrochloric acid.

Identification Determine the infrared absorption spectrum of L-Leucine, previously dried, as directed in the potassium bromide disk method under the Infrared Spectrophotometry, and compare the spectrum with the Reference Spectrum: both spectra exhibit similar intensities of absorption at the same wave numbers.

Optical rotation $[\alpha]_D^{20}$: +14.5 – +16.0° (after drying, 1 g, 6 mol/L hydrochloric acid TS, 25 mL, 100 mm).

pH Dissolve 1.0 g of L-Leucine in 100 mL of water: the pH of this solution is between 5.5 and 6.5.

Purity (1) Clarity and color of solution—Dissolve 0.5 g of L-Leucine in 10 mL of 1 mol/L hydrochloric acid TS: the solution is clear and colorless.

(2) Chloride—Dissolve 0.5 g of L-Leucine in 40 mL of water and 6 mL of dilute nitric acid, and add water to make 50 mL. Perform the test using this solution as the test solution. Prepare the control solution with 0.30 mL of 0.01 mol/L hydrochloric acid VS (not more than 0.021%).

(3) Sulfate—Dissolve 0.6 g of L-Leucine in 40 mL of water and 1 mL of dilute hydrochloric acid, and add water to make 50 mL. Perform the test using this solution as the test solution. Prepare the control solution with 0.35 mL of 0.005 mol/L sulfuric acid VS (not more than 0.028%).

(4) Ammonium—Perform the test with 0.25 g of L-Leucine. Prepare the control solution with 5.0 mL of Standard Ammonium Solution (not more than 0.02%).

(5) Heavy metals—Proceed with 1.0 g of L-Leucine according to Method 4, and perform the test. Prepare the control solution with 2.0 mL of Standard Lead Solution (not more than 20 ppm).

(6) Arsenic—Prepare the test solution with 1.0 g of L-Leucine according to Method 2, and perform the test using Apparatus B (not more than 2 ppm).

(7) Other amino acids—Dissolve 0.10 g of L-Leucine by warming, after cooling, add water to make 25 mL, and use this solution as the sample solution. Pipet 1 mL of the sample solution, and add water to make exactly 50 mL. Pipet 5 mL of this solution, add water to make exactly 20 mL, and use this solution as the standard solution. Perform the test with these solutions as directed under the Thin-layer Chromatography. Spot 5 μ L each of the sample solution and the standard solution on a plate of silica gel for thin-layer chromatography. Develop the plate with a mixture of 1-butanol, water and acetic acid (100) (3:1:1) to a distance of about 10 cm, and dry the plate at 80°C for 30 minutes. Spray evenly a solution of ninhydrin in acetone (1 in 50) on the plate, and heat at 80°C for 5 minutes: the spots other than the principal spot from the sample solution are not more intense than the spot from the standard solution.

Loss on drying Not more than 0.30% (1 g, 105°C, 3 hours).

Residue on ignition Not more than 0.10% (1 g).

Assay Weigh accurately about 0.13 g of L-Leucine, previously dried, and dissolve in 3 mL of formic acid, add 50 mL of acetic acid (100), and titrate with 0.1 mol/L perchloric acid VS (potentiometric titration). Perform a blank determination, and make any necessary correction.

Each mL of 0.1 mol/L perchloric acid VS
= 13.117 mg of $C_6H_{13}NO_2$

Containers and storage Containers—Well-closed containers.