

in the volumetric flask, and use this solution as the sample solution. Separately, dissolve 0.4396 g of potassium dihydrogenphosphate in water to make exactly 200 mL. To 2.0 mL of this solution add water to make exactly 100 mL. Transfer 2.0 mL of this solution to a 25-mL volumetric flask, add 16 mL of water, and use this solution as the standard solution. To the sample solution and the standard solution add 1 mL of diluted sulfuric acid (3 in 7), 0.5 mL of nitric acid, 0.75 mL of hexaammonium heptamolybdate TS, 1 mL of 1-amino-2-naphthol-4-sulfonic acid TS and water to make 25 mL, and allow to stand for 5 minutes. Perform the test with these solutions as directed under the Ultraviolet-visible Spectrophotometry, using water as the blank: the absorbance of the subsequent solution of the sample solution at 750 nm is not larger than that of the subsequent solution of the standard solution.

Water 10.0 – 12.0% (0.2 g, back titration).

Residue on ignition Not more than 0.10% (1 g).

Assay Weigh accurately about 0.25 g of Mercaptopurine, dissolve in 90 mL of *N,N*-dimethylformamide, and titrate with 0.1 mol/L tetramethylammonium hydroxide VS (potentiometric titration). Perform a blank determination with a mixture of 90 mL of *N,N*-dimethylformamide and 15 mL of water, and make any necessary correction.

Each mL of 0.1 mol/L tetramethylammonium hydroxide VS
= 15.218 mg of C₅H₄N₄S

Containers and storage Containers—Well-closed containers.

Mercurochrome

Merbromin

マーキュロクロム

Mercurochrome is a sodium salt of a mixture of brominated and mercurized fluoresceins. When dried, it contains not less than 18.0% and not more than 22.4% of bromine (Br: 79.90), and not less than 22.4% and not more than 26.7% of mercury (Hg: 200.59).

Description Mercurochrome occurs as blue-green to greenish red-brown scales or granules. It is odorless.

It is freely soluble in water, but sometimes leaves a small amount of insoluble matter. It is practically insoluble in ethanol (95) and in diethyl ether.

Identification (1) A solution of Mercurochrome (1 in 2000) shows a red color and a yellow-green fluorescence.

(2) To 5 mL of a solution of Mercurochrome (1 in 250) add 3 drops of dilute sulfuric acid: a reddish orange precipitate is produced.

(3) Heat 0.1 g of Mercurochrome with small crystals of iodine in a test tube: red crystals are sublimed on the upper part of the tube. If yellow crystals are produced, scratch with a glass rod: the color of the crystals changes to red.

(4) Place 0.1 g of Mercurochrome in a porcelain crucible, add 1 mL of a solution of sodium hydroxide (1 in 6),

evaporate to dryness with stirring, and ignite. Dissolve the residue in 5 mL of water, acidify with hydrochloric acid, and shake with 3 drops of chlorine TS and 2 mL of chloroform: a yellowish brown color develops in the chloroform layer.

Purity (1) Dyestuff—Dissolve 0.40 g of Mercurochrome in 20 mL of water, add 3 mL of dilute sulfuric acid, and filter: the filtrate has no more color than Matching Fluid C.

(2) Soluble halides—Dissolve 5.0 g of Mercurochrome in 80 mL of water, add 10 mL of dilute nitric acid and water to make 100 mL, shake, and filter. Transfer 40 mL of the filtrate to a Nessler tube, add 6 mL of dilute nitric acid and water to make 50 mL, then add 1 mL of silver nitrate TS, mix well, and allow to stand for 5 minutes protected from direct sunlight: no turbidity is produced, or even if produced, it is not more than that of the following control solution.

Control solution: To 0.25 mL of 0.01 mol/L hydrochloric acid VS add 6 mL of dilute nitric acid and water to make 50 mL, then add 1 mL of silver nitrate TS, and proceed as directed above.

(3) Soluble mercury salts—To 5 mL of the filtrate obtained in (1) add 5 mL of water, and use this solution as the sample solution. Dissolve 0.040 g of mercury (II) chloride, weighed accurately, in water to make 1000 mL, and add 3 mL of dilute sulfuric acid to 20 mL of this solution. To 5 mL of the solution add 5 mL of water, and use this as the control solution. Add 1 drop each of sodium sulfide TS to these solutions, and compare: the sample solution has no more color than the control solution.

(4) Insoluble mercury compounds—Dissolve 2.5 g of Mercurochrome in 50 mL of water, allow to stand for 24 hours, centrifuge, and wash the precipitate with small portions of water until the last washing becomes colorless. Transfer the precipitate to a glass-stoppered flask, add exactly 5 mL of 0.05 mol/L iodine VS, allow to stand for 1 hour with frequent agitation, add 4.3 mL of 0.1 mol/L sodium thiosulfate VS dropwise with shaking, and add 1 mL of starch TS: a blue color develops.

Loss on drying Not more than 5.0% (1 g, 105°C, 5 hours).

Assay (1) Mercury—Weigh accurately about 0.6 g of Mercurochrome, previously powdered and dried, transfer to an iodine flask, dissolve in 50 mL of water, add 8 mL of acetic acid (31), 20 mL of chloroform and exactly 30 mL of 0.05 mol/L iodine VS, stopper tightly, and allow to stand for 1 hour with frequent, vigorous shaking. Titrate the excess iodine with 0.1 mol/L sodium thiosulfate VS with vigorous shaking (indicator: 1 mL of starch TS). Perform a blank determination, and make any necessary correction.

Each mL of 0.05 mol/L iodine VS = 10.030 mg of Hg

(2) Bromine—Weigh accurately about 0.5 g of Mercurochrome, previously powdered and dried, in a porcelain crucible, add 2 g of potassium nitrate, 3 g of potassium carbonate and 3 g of anhydrous sodium carbonate, mix well, cover the surface of the mixture with 3 g of a mixture of equal amounts of potassium carbonate and anhydrous sodium carbonate, and ignite almost to fusion. Cool, dissolve the ignited mixture in 80 mL of warm water, acidify with nitric acid, and add exactly 25 mL of 0.1 mol/L silver nitrate VS. Shake well, and titrate the excess silver nitrate with 0.1 mol/L ammonium thiocyanate VS (indicator: 2 mL of

ammonium iron (III) sulfate TS). Perform a blank determination and make any necessary correction.

Each mL of 0.1 mol/L silver nitrate VS = 7.990 mg of Br

Containers and storage Containers—Tight containers.
Storage—Light-resistant.

Mercurochrome Solution

Merbromin Solution

マーキュロクロム液

Mercurochrome Solution contains not less than 0.42 w/v% and not more than 0.56 w/v% of mercury (Hg: 200.59).

Method of preparation

Mercurochrome	20 g
Purified Water	a sufficient quantity
To make 1000 mL	

Prepare by mixing the above ingredients.

Description Mercurochrome Solution is a dark red liquid.

Identification (1) To 1 mL of Mercurochrome Solution add 40 mL of water: the resulting solution shows a red color and a yellow-green fluorescence.

(2) Dilute 1 mL of Mercurochrome Solution with 4 mL of water, and add 3 drops of dilute sulfuric acid: a red-orange precipitate is produced.

(3) Evaporate 5 mL of Mercurochrome Solution to dryness, and proceed with the residue as directed in the Identification (3) under Mercurochrome.

(4) To 5 mL of Mercurochrome Solution add 1 mL of a solution of sodium hydroxide (1 in 6), and proceed as directed in the Identification (4) under Mercurochrome.

Purity Dyestuff—To 20 mL of Mercurochrome Solution add 3 mL of dilute sulfuric acid, and filter: the filtrate has no more color than Matching Fluid C.

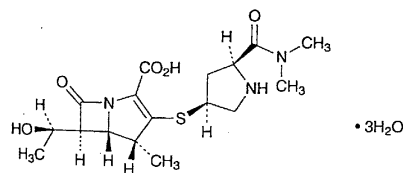
Assay Transfer exactly measured 30 mL of Mercurochrome Solution to an iodine flask, dilute with 20 mL of water, add 8 mL of acetic acid (31) and 20 mL of chloroform, and proceed as directed in the Assay (1) under Mercurochrome.

Each mL of 0.05 mol/L iodine VS = 10.030 mg of Hg

Containers and storage Containers—Tight containers.
Storage—Light-resistant.

Meropenem Trihydrate

メロペネム 三水和物



$C_{17}H_{25}N_3O_5S \cdot 3H_2O$: 437.51

(4*R*,5*S*,6*S*)-3-[(3*S*,5*S*)-5-(Dimethylcarbamoyl)pyrrolidin-3-ylsulfanyl]-6-[(1*R*)-1-hydroxyethyl]-4-methyl-7-oxo-1-azabicyclo[3.2.0]hept-2-ene-2-carboxylic acid trihydrate [I19478-56-7]

Meropenem Trihydrate contains not less than 900 μ g (potency) per mg, calculated on the anhydrous basis. The potency of Meropenem Trihydrate is expressed as mass (potency) of meropenem ($C_{17}H_{25}N_3O_5S$: 383.46).

Description Meropenem Trihydrate occurs as a white to light yellow crystalline powder.

It is sparingly soluble in water, and practically insoluble in ethanol (95).

Identification (1) Dissolve 0.01 g of Meropenem Trihydrate in 2 mL of water, add 3 mL of hydroxylammonium chloride-ethanol TS, allow to stand for 5 minutes, add 1 mL of acidic ammonium iron (III) sulfate TS, and shake: a red-brown color develops.

(2) Determine the absorption spectra of solutions of Meropenem Trihydrate and Meropenem Trihydrate Reference Standard (3 in 100,000) as directed under the Ultraviolet-visible Spectrophotometry, and compare the spectra: both spectra exhibit similar intensities of absorption at the same wavelengths.

(3) Determine the infrared absorption spectra of Meropenem Trihydrate and Meropenem Trihydrate Reference Standard as directed in the potassium bromide disk method under the Infrared Spectrophotometry, and compare the spectra: both spectra exhibit similar intensities of absorption at the same wave numbers.

Optical rotation $[\alpha]_D^{20}$: -17 – -21° (0.22 g calculated as the anhydrous basis, water, 50 mL, 100 mm).

pH Dissolve 0.2 g of Meropenem Trihydrate in 20 mL of water: the pH of the solution is between 4.0 and 6.0.

Purity (1) Clarity and color of solution—Being specified separately.

(2) Heavy metals—Proceed with 2.0 g of Meropenem Trihydrate according to Method 2, and perform the test. Prepare the control solution with 2.0 mL of Standard Lead Solution (not more than 10 ppm).

(3) Related substances—Being specified separately.

Water Not less than 11.4% and not more than 13.4% (0.15 g, coulometric titration. Use a titration apparatus equipped with a water evaporation device, and measure at 140°C of the evaporating temperature).