

the gas evolved does not turn red litmus paper to blue.

(5) Cyanide—Dissolve 0.5 g of Potassium Iodide in 10 mL of water. To 5 mL of this solution add 1 drop of iron (II) sulfate TS and 2 mL of sodium hydroxide TS, warm, then add 4 mL of hydrochloric acid: no green color develops.

(6) Iodate—Dissolve 0.5 g of Potassium Iodide in 10 mL of freshly boiled and cooled water, and add 2 drops of dilute sulfuric acid and 1 drop of starch TS: no blue color develops immediately.

(7) Heavy metals—Proceed with 2.0 g of Potassium Iodide according to Method 1, and perform the test. Prepare the control solution with 2.0 mL of Standard Lead Solution (not more than 10 ppm).

(8) Barium—Dissolve 0.5 g of Potassium Iodide in 10 mL of water, add 1 mL of dilute sulfuric acid, and allow to stand for 5 minutes: no turbidity is produced.

(9) Sodium—Dissolve 1.0 g of Potassium Iodide in 10 mL of water, and perform the Flame Coloration Test (1): a yellow color develops, but does not persist.

(10) Arsenic—Prepare the test solution with 0.40 g of Potassium Iodide according to Method 1, and perform the test using Apparatus B (not more than 5 ppm).

Loss on drying Not more than 1.0% (2 g, 105°C, 4 hours).

Assay Weigh accurately about 0.5 g of Potassium Iodide, previously dried, in an iodine flask, dissolve in 10 mL of water, add 35 mL of hydrochloric acid and 5 mL of chloroform, and titrate with 0.05 mol/L potassium iodate VS with shaking until the red-purple color of the chloroform layer disappears. The end point is reached when the red-purple color does not reappear in the chloroform layer within 5 minutes after the layer has been decolorized.

Each mL of 0.05 mol/L potassium iodate VS
= 16.600 mg of KI

Containers and storage Containers—Tight containers.
Storage—Light-resistant.

Potassium Permanganate

過マンガン酸カリウム

KMnO₄: 158.03

Potassium Permanganate, when dried, contains not less than 99.0% of KMnO₄.

Description Potassium Permanganate occurs as dark purple crystals and has a metallic luster.

It is soluble in water.

A solution of Potassium Permanganate (1 in 1000) has a slightly sweet, astringent taste.

Identification A solution of Potassium Permanganate (1 in 100) responds to the Qualitative Tests for permanganate.

Purity (1) Water-insoluble substances—Dissolve 2.0 g of Potassium Permanganate, previously powdered, in 200 mL of water. Filter the insoluble substances through a tared glass filter (G4), wash with water until the last washing shows no color, and dry at 105°C for 2 hours: the mass of

the residue is not more than 4 mg.

(2) Arsenic—Dissolve 0.40 g of Potassium Permanganate in 10 mL of water, add 1 mL of sulfuric acid, add hydrogen peroxide (30) dropwise until the solution remains colorless, and evaporate on a sand bath nearly to dryness. Dissolve the residue in 5 mL of water, and perform the test with this solution as the test solution using Apparatus B: the color produced is not more intense than the following standard color.

Standard color: To 10 mL of water add 1 mL of sulfuric acid and the same volume of hydrogen peroxide (30) as used for the preparation of the test solution. Evaporate the solution on a sand bath nearly to dryness, add 2.0 mL of Standard Arsenic Solution and water to make 5 mL, and carry out the test with this solution in the same manner as the test solution (not more than 5 ppm).

Loss on drying Not more than 0.5% (1 g, silica gel, 18 hours).

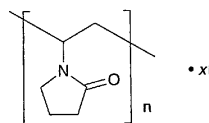
Assay Weigh accurately about 0.6 g of Potassium Permanganate, previously dried, dissolve in water to make exactly 200 mL, and use this solution as the sample solution. Pipet 25 mL of 0.05 mol/L oxalic acid VS into a 500-mL conical flask, add 200 mL of diluted sulfuric acid (1 in 20), and keep at a temperature between 30°C and 35°C. Transfer the sample solution to a buret. Add quickly 23 mL of the sample solution from the buret to the flask while shaking gently, and then allow the flask to stand until the red color disappears. Warm the mixture to a temperature between 55°C and 60°C, and continue the titration slowly until the red color persists for 30 seconds.

Each mL of 0.05 mol/L oxalic acid VS
= 3.1607 mg of KMnO₄

Containers and storage Containers—Tight containers.

Povidone-Iodine

ポビドンヨード



(C₆H₉NO)_n·xI

Poly[(2-oxopyrrolidin-1-yl)ethylene] iodine [25655-41-8]

Povidone-Iodine is a complex of iodine with 1-vinyl-2-pyrrolidone polymer.

It contains not less than 9.0% and not more than 12.0% of available iodine (I: 126.90), and not less than 9.5% and not more than 11.5% of nitrogen (N: 14.01), calculated on the dried basis.

Description Povidone-Iodine occurs as a dark red-brown powder. It has a faint, characteristic odor.

It is freely soluble in water and in ethanol (95), and practically insoluble in diethyl ether.

The pH of a solution of Povidone-Iodine (1 in 100) is between 1.5 and 3.5.