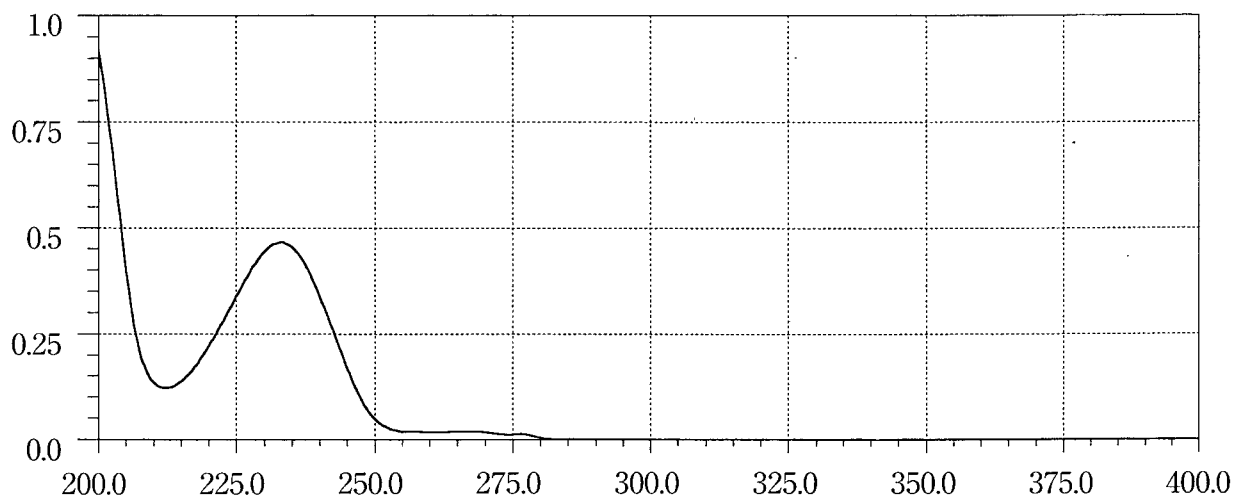
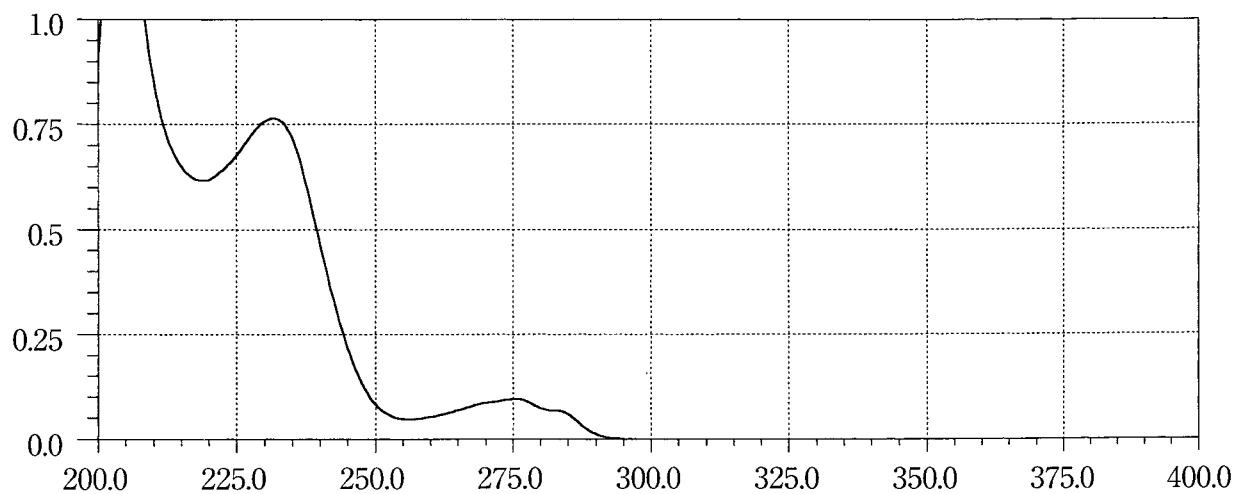
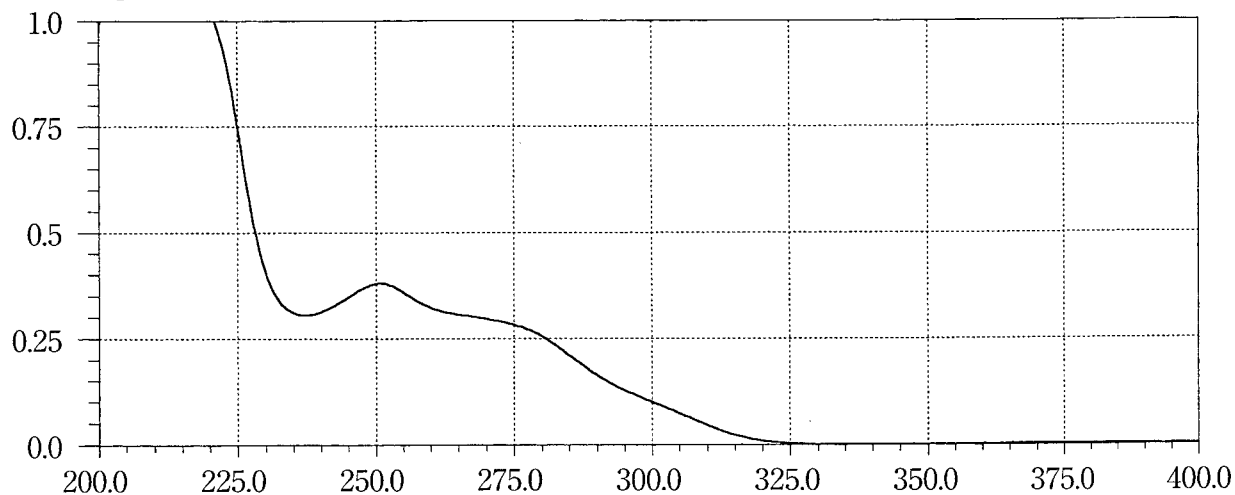


**Chlorpropamide**

A solution prepared as follows: Dissolve 0.08 g of Chlorpropamide in 50 mL of methanol. To 1 mL of this solution add 0.01 mol/L hydrochloric acid TS to make 200 mL.

**Clinofibrate**

A solution in ethanol (99.5) (1 in 50,000)

**Clocapramine Hydrochloride**

A solution in methanol (1 in 40,000)